

# C++Builder® 2010

## RAD C++ Development Environment for Windows



EMBARCADERO  
TECHNOLOGIES®



C++Builder® is an award-winning C++ development environment for building interactive, UI-oriented desktop, workstation, touch-screen, kiosk, and Web applications. Millions of developers worldwide choose C++Builder over other C++ development tools because it provides them with the world's only true two-way visual RAD C++ development environment with outstanding features for quickly building rich UI and database applications. Applications built with C++Builder are lightning fast, compact, provide rich UIs, and can connect with virtually any database or data source "out-of-the-box".

C++Builder includes a powerful and integrated ANSI/ISO C++ tool chain, a visual two-way development environment for building interactive UI-oriented applications, and a rich and extensible visual component framework with over 250 reusable classes/components. Thousands of additional C++Builder components for virtually any specialized application, technology, function, or task are available from hundreds of third parties as well as from the C++Builder community of over 1.5 million developers.

- RADically reduce development time
- Touch the future
- Any database, architecture, or protocol

### RADICALLY REDUCE DEVELOPMENT TIME

Programming in C++Builder is far more efficient than developing in other C/C++ environments or frameworks such as GCC, Visual C++, and MFC. C++Builder developers utilize the Visual Component Library (VCL) which encapsulate complex, time-consuming Windows API "adventures" into simple reusable and extendable components. The VCL is fully integrated into the development environment and two-way visual designers. This makes it easy to manipulate component properties and methods both visually and in code. As a result, applications built with the VCL framework require writing, debugging, and testing far fewer lines of code, often up to 5x fewer LOC in real-world apps, to accomplish the same functionality – without sacrificing performance or capability. By utilizing components, resulting applications are also higher quality, and easier to maintain and enhance.

- RAD two-way visual development environment and VCL component framework
- High speed ANSI/ISO C/C++ compiler and tool chain with draft C++0x spec support
- Integrated ISO C++ Standard Library, TR1, and Boost libraries

### TOUCH THE FUTURE

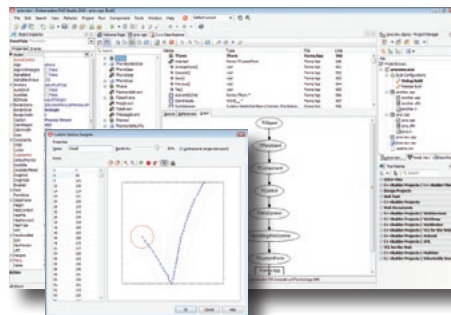
C++Builder is the only C++ development environment with built-in touch and gesturing support for multiple Windows platforms, making it the best way to build modern interactive touch and multi-touch applications, kiosks, tablets, point of sale (POS) systems, and more. C++Builder's touch support provides more features, control, and flexibility than other environments:

- Granular control – other tools put the developer at the mercy of the OS or desktop for touch support, but C++Builder gives you control over how touch input works within your app at the form, container, and control level
- Multi-OS support – works with Windows 7 as well as Windows Vista, XP, and 2000
- Flexible input support – single-touch, multi-touch, pen, and mouse support
- Rich gesture support – over 30+ standard gestures plus ability to design your own custom gestures
- Multi-locale Virtual Touch Keyboard VCL Component

### ANY DATABASE, ARCHITECTURE, OR PROTOCOL

Most C++ data access systems are either database vendor-specific, require significant additional support for each database or data source, or utilize inefficient "universal" data connectivity options. C++Builder's DataSnap® framework and dbExpress™ data access drivers are designed to allow you to build one system and seamlessly connect to a variety of data sources while retaining vendor-specific database features and unencumbered native speed, performance, and control.

- Native high speed support for Microsoft SQL Server, InterBase, DB2, Oracle, Sybase, MySQL, Firebird, and more
- Flexible "build once – connect to many" dbExpress data access
- DataSnap with JSON, REST, COM, HTTP, TCP/IP and XML support for client/server and multi-tier connectivity with virtually any other system



New touch and gesture enabled app development and Class Explorer in C++Builder 2010

### Key Features

- Integrated ANSI/ISO C++ Tools w/draft C++0x support
- RAD IDE with Fast Drag-n-Drop design
- Integrated Boost and TR1
- Over 250+ VCL Controls
- Built-in touch and gesturing support
- dbExpress with support for 9 major databases
- DataSnap n-Tier middleware w/JSON, REST, HTTP, COM, and XML
- Target Win2k, Xp, Vista, and Win7 from single source

### New! in C++Builder 2010

- Windows 7 API, Direct2D, and Multi-touch support
- Touch and gesturing for Win2k, XP, Vista, and Win7
- IDE Insight – instant access to any feature or setting
- C++ Class Explorer
- Debug Visualizers
- Firebird dbExpress support
- C++Builder 5/6 Classic mode layout option w/tabbed toolbar
- And much more!

Features	Description
<b>C++Builder</b>	
<b>High Productivity Integrated Development Environment (IDE)</b>	
Unicode-Enabled Code Editor	Includes color syntax highlighting and Code Insight, live code templates and class completion
IDE and Database Tools	Include new IDE Insight and Class Explorer plus project manager, visual designer, object inspector, data explorer, SQL query builder, and localization tools
Debugging and Unit Testing	Integrated debugger with new multi-thread debugging, remote debugging, and unit testing
<b>Compiler, Library, and SDK Support</b>	
Embarcadero C++ Compiler 6.20 (bcc32)	Includes support for C++0x standards
Dinkumware STL	Enables conformance with ANSI/ISO C++ standards
Boost C++ Libraries	Popular open source library collection, preconfigured for use with C++Builder
TR1 support	C++ Technical Report 1 Standard library support in Dinkumware and Boost Libraries
Microsoft Win 32 SDK	Helps with support for Windows including themed applications
<b>VCL– Visual Component Library</b>	
VCL Library	Supports rapid drag-and-drop visual development with hundreds of components including new ribbon controls
Touch and Gesture Interface Support	Integrated VCL support for touch, gesture designer, virtual keyboard, and interactive multi-touch gestures for panning, zooming and rotating
<b>Database Application Development, Access, and Design</b>	
Database Connectivity and Database Drivers	Remote and local connectivity to Oracle, Firebird, DB2, Microsoft SQL Server, Informix, Sybase, InterBase, MySQL, and SQL Anywhere in the Enterprise and Architect editions. Local connectivity to InterBase, MySQL, and SQL Anywhere in the Professional edition.
Blackfish SQL database	Fully managed code, SQL-compliant, highly portable, and embedded database with royalty-free deployment license
InterBase Developer Edition	Highly scalable, powerful, embeddable database with development license
DataSnap	Multi-tier database application framework (Not available in the Professional Edition)
<b>Web Application Development and Remoting</b>	
VCL for the Web	Lets you build native web and intranet applications (Five connection limit in Professional Edition)
COM Support with Wizards	Enables creation of COM+ objects and servers and type library editor
<b>Complete Development Solution</b>	
UML Modeling	Includes class diagrams and synchronization between the model and source code
Database Modeling and Design Tools	ER/Studio Developer Edition helps you better understand database structures. Only available in Architect Edition
Bundled Tools	Includes Rave Reports, glyFX icon library, InstallAware Express installer and software from Embarcadero partners

System Requirements
<ul style="list-style-type: none"> <li>• 1 GB RAM (2 GB+ recommended)</li> <li>• 3 GB free hard disk space</li> <li>• 750 MB free hard disk space for prerequisites</li> <li>• DVD-ROM drive</li> <li>• 1024x768 or higher-resolution monitor</li> <li>• Mouse or other pointing device</li> </ul>
<b>Processor</b> <ul style="list-style-type: none"> <li>• Intel® Pentium® or compatible, 1.4 GHz minimum (2 GHz+ recommended)</li> </ul>
<b>Windows</b> <ul style="list-style-type: none"> <li>• Microsoft® Windows 7</li> <li>• Microsoft Windows Vista SP1 (requires administrator rights)</li> <li>• Microsoft Windows XP Home or Professional (SP2 or SP3)</li> <li>• Microsoft Windows Server 2003 (SP2) or 2008</li> </ul>

Product Editions
<b>Professional</b> <ul style="list-style-type: none"> <li>• Local database connectivity to InterBase, Blackfish SQL, and MySQL</li> <li>• Blackfish SQL deployment on systems with one user, 512 MB database size</li> <li>• VCL for the Web with limit of five connections</li> </ul>
<b>Enterprise – Includes Professional Edition plus:</b> <ul style="list-style-type: none"> <li>• Database server connectivity to InterBase, Firebird Blackfish SQL, MySQL, Microsoft SQL Server, Oracle, DB2, Informix, and Sybase</li> <li>• DataSnap multi-tier application development</li> <li>• Blackfish SQL deployment on systems with five users, 2GB database size</li> <li>• VCL for the Web with no connection limit</li> <li>• Additional UML modeling capabilities</li> </ul>
<b>Architect – Includes Enterprise Edition plus:</b> <ul style="list-style-type: none"> <li>• ER/Studio Developer Edition for database modeling and development</li> <li>• Advanced UML Modeling including language neutral modeling projects</li> </ul>

Download a Free Trial at [www.embarcadero.com](http://www.embarcadero.com)

Corporate Headquarters | Embarcadero Technologies | 100 California Street, 12th Floor | San Francisco, CA 94111 | [www.embarcadero.com](http://www.embarcadero.com) | [sales@embarcadero.com](mailto:sales@embarcadero.com)