

Delphi Prism 2010 Data Sheet

Delphi Prism™

Rapid Application Development for .NET and Mono

Delphi Prism™ is the fast way to build .NET, ASP.NET, data-driven, and cross-platform Mono applications. Delphi Prism includes a full IDE and powerful programming language with features not available in other .NET programming languages. You can target Windows®, Linux® and Mac OS® X using Mono, connect with all your data, and work with the latest .NET technologies including WPF and LINQ.

- Push the envelope with a powerful, full-featured development language
- Work with all your data sources
- Gain deployment flexibility for .NET, Mac and Linux
- Make the connection to multi-tier
- Design for the desktop with Windows Forms and WPF
- Bring new power to your Web applications

Push the envelope with a powerful, full-featured development language

Delphi Prism provides a highly readable, advanced language for the Microsoft .NET Framework and other implementations of the Common Language Runtime (CLR). While staying true to its Delphi and Pascal roots, the modern Delphi Prism language helps developers move into the future by providing innovative language features such as Aspect Oriented Programming (AOP), generics, sequences, queries, and parallel computing.

Work with all your data sources

Delphi Prism leverages ADO.NET for database connectivity in .NET applications. In addition, Delphi Prism provides developers with a database access framework called dbExpress for fast, easy access to Embarcadero's InterBase® and Blackfish™ SQL databases. ASP.NET developers can provide support for membership, roles, profiles, and the other features of the ASP.NET provider interface for multiple backend databases.

Gain deployment flexibility for .NET, Mac and Linux

Delphi Prism supports development for the Mono platform and other implementations of the .NET CLR. Developers can compile code against multiple CLR platforms, including Mono for Linux and for the Mac for cross-platform deployment. The Delphi Prism compiler is a completely native .NET application and can move to other CLR implementations such as Mono. And Delphi Prism will run under these alternative CLR platforms and supports cross-linking against them.

Make the connection to multi-tier

With Delphi Prism Enterprise, developers can create .NET client applications that interact with Windows native DataSnap application servers developed with Delphi.

Clients can access server methods as well as the traditional IAppServer interface-based DataSnap servers.

Design for the desktop with Windows Forms and WPF

With Delphi Prism, you can leverage the powerful and time-proven Windows Forms designer in Visual Studio, including support for partial classes and choose from the wide variety of available third party WinForms components. If you choose to use Windows Presentation Foundation (WPF) for desktop applications, Delphi Prism provides full design-time and run-time support for WPF.

Bring new power to your Web applications

For Web application development, Delphi Prism provides full support for ASP.NET and for Silverlight when installed into Visual Studio 2008. Delphi Prism developers can use the full extent of the Visual Studio designers for these platforms as well as the entire ecosystem of third-party components for these web development platforms.

Related Products

Embarcadero™ RAD Studio

Combines Delphi Prism, Delphi , and C++Builder 2010 to provide a complete solution for native Windows and .NET application development.

Delphi®

The fastest way to build native Windows applications.

C++Builder®

Combines the power of the C and C++ languages and libraries with the productivity of visual rapid application development.

InterBase® SMP

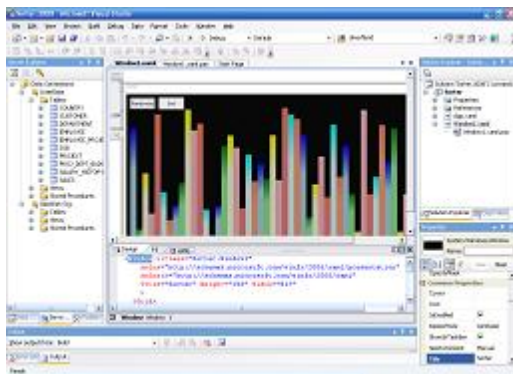
Highly scalable, powerful, embeddable database.

ER/Studio®

Data modeling tool for designing and understanding your databases.

Embarcadero® All-Access™

Instant access to the languages, tools, and technologies to design, build, and run your software applications and database systems.



Rapidly build applications using WPF, ASP.NET, Silverlight, and other .NET

Feature

Delphi Prism

Delphi Prism Language

Parallel Programming Features

Description

Includes futures, parallel loops, asynchronous co

LINQ Query Expressions

Property Notifications

Bundled Language Features

Aspect Oriented Programming

Delphi based language

Code Flow Analysis and FxCop Code Analysis

Target Multiple Platforms

.NET 1.1, 2.0, 3.0, 3.5, and 4.0

Mono 2.4 for Windows, Linux and Mac OS X

Integrated Design Environment (IDE) and Visual Studio Integration

Standalone or Visual Studio integrated install

Windows Forms, WPF and ASP.NET form designers

Code Editor with IntelliSense, method hints and error markers

Integrated Debugging

Web Application Development

ASP.NET development

Editor support for ASP.NET

blocks, locked/locking directives for parallel programming and support for the new parallel libraries of .NET 4.0

Combines the querying capabilities of database languages such as SQL and applies it to any type of data, natively within the Delphi Prism language

Makes it easy to develop solutions that follow the model/view/controller design pattern

Includes enhanced nullable types, class contracts, enhanced constructor calls, and class references

Change the behavior of code, add or remove fields, properties, events or methods and even extra classes

Supports writing managed applications using a new language with roots in Pascal and Object Pascal and a familiar syntax for Delphi developers

Checks the source for unreachable statements, unused local assignments, locals that aren't set before they are used and more. Provides code analysis, which checks .NET assemblies for conformity to development guidelines.

Target multiple .NET versions

Supports multi-platform deployment of applications using Mono, an open source implementation of .NET compatible runtime and toolset

Provides the flexibility to install as a standalone application using the included Visual Studio 2008 or integrate seamlessly with an existing install of Visual Studio IDE

Enable visual design of Windows and Web applications

Speed coding with a code editor that completes statements and code fragments using pop-ups and completion, hints that show the possible parameters for a given call, and markers that appear beneath potentially incorrect code

Quickly find and fix errors with a full set of local, managed, cross-thread and multi-process debugging tools

Delphi Prism provides extensive support for the ASP.NET 2.0 project system provided with Visual Studio including a dbExpress ASP provider for ASP.NET

Full IntelliSense, code completion from .aspx

to .aspx.pas file, Delphi Prism syntax highlighting inside <script> and <%...%> tags inside the .aspx file, full line mapping support

Database Application Development, Access and Design

ADO.NET database connectivity

The .NET programming environment for building database applications based on native database files or XML data

dbExpress connectivity to Blackfish SQL and InterBase

Provides ADO.NET connectivity to InterBase and Blackfish SQL. Supports local connectivity in the Professional edition and both local and remote connectivity in the Enterprise edition

Server Explorer

Server management window used to open data connections and to log on to servers and explore databases and system services

DataSnap

Enables building .NET DataSnap client applications that access a middle-tier application server that contains and manages remote data modules.

Blackfish SQL database

Development and royalty free deployment licenses for the fully managed, SQL-compliant, highly portable embedded database

InterBase SMP Developer Edition

Twenty user developer edition of the highly scalable, powerful, embeddable database

System Requirements

Supported Architectures:

x86

x64 (WOW)

Hardware Requirements:

Minimum: 1.6 GHz CPU, 384 MB RAM, 1024x768 display, 5400 RPM hard disk

Recommended: 2.2 GHz or higher CPU, 1024 MB or more RAM, 1280x1024 display, 7200 RPM or higher hard disk

On Windows Vista: 2.4 GHz CPU, 768 MB RAM

1 GB of available space required on system drive

2 GB of available space required on installation drive (includes space for .NET Framework and SDK)

Mouse or compatible pointing device

Supported Operating Systems:

Windows XP Service Pack 2 or above

Windows Server 2003 Service Pack 1 or above

Windows Server 2003 R2 or above

Windows Vista

Windows Server 2008

Visual Studio Integration

Install standalone or integrated into Visual Studio 2008