



● Change Manager

Database Change Management

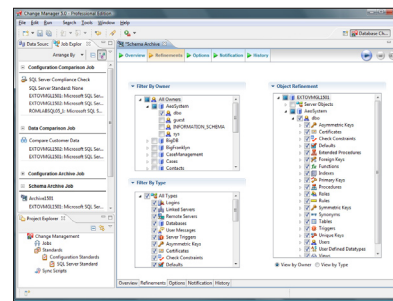
Embarcadero® Change Manager™ offers database administrators and developers a powerful set of tools to simplify and automate the database change management lifecycle. The schema compare and alter, data compare and synchronization, and configuration auditing capabilities let you report on database changes, roll out new releases, and pinpoint database performance problems that result from both planned and unplanned changes. Change Manager supports IBM® DB2® for LUW, Microsoft® SQL Server, Oracle®, and Sybase®.

- Simplify and automate database change management
- Streamline development cycles
- Ensure database availability, performance, and compliance

SIMPLIFY AND AUTOMATE DATABASE CHANGE MANAGEMENT

Organizations struggle to adopt reliable, repeatable, and efficient processes to manage database changes: you want to ensure that changes applied to production make it back into the database design, development, and test environments; you want to easily bundle changes together for migration between environments; and you want to keep track of tables, procedures, settings, and privileges. A tool designed to handle database change management tasks can simplify processes, streamline complex tasks, reduce the chance for errors, and minimize downtime.

Change Manager is a database comparison, alter, and synchronization tool that generates reports and reconciles differences between databases, tables, schemas, and other database objects. With Change Manager you can easily compare any two databases and create schema and configuration baselines. Sophisticated object mapping features let you select only what you need and accelerate your comparison jobs.

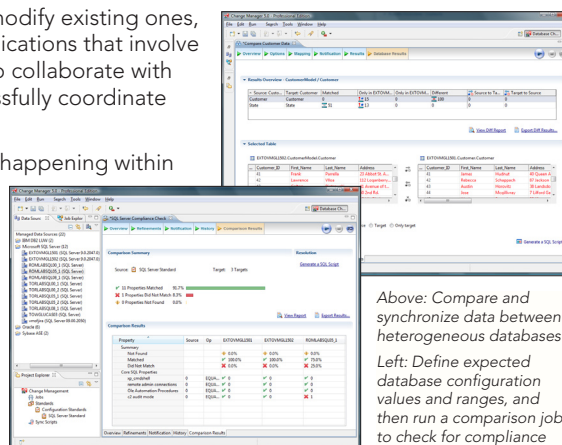


Select schema objects and types for comparison or archive jobs .

STREAMLINE DEVELOPMENT CYCLES

Each day development teams create new applications, modify existing ones, and roll out customizations or updates to packaged applications that involve changes to the underlying database. Developers need to collaborate with each other, with DBAs, and with data modelers to successfully coordinate change across the development lifecycle.

Change Manager offers developers visibility into what is happening within the development, test, and production environments. They can capture a snapshot of changed objects and automatically generate a change script, eliminating the need to determine the correct syntax for dependant objects and ensuring that data is preserved. Change manager also enables collaboration through source control integration, allowing DBAs to notify developers when production changes occur.



Above: Compare and synchronize data between heterogeneous databases
Left: Define expected database configuration values and ranges, and then run a comparison job to check for compliance

ENSURE DATABASE AVAILABILITY, PERFORMANCE, AND COMPLIANCE

DBAs are responsible for safeguarding database performance and availability while ensuring that database configurations adhere to regulations. Change Manager helps DBAs track changes to structures, users, permissions, and database settings.

Change Manager also allows DBAs to specify configuration standards, which can be used to check hundreds of databases and quickly identify security risks. It reports on points in time—or differences between points in time—saving DBAs hours of troubleshooting while ensuring compliance with policies and performance standards.

Related Products

DBArtisan®

The leading cross-platform database administration tool, helps DBAs maximize performance, availability, and security.

Rapid SQL®

Write high-performance, quality SQL in an integrated cross-platform database development environment.

ER/Studio®

A model-driven data architecture and database design solution.

Product Features						
Feature	Description	Edition				
General Features		Personal	Standard	Professional	Ultimate	
Configurable Workspace	Arrange navigation options, explorers, and editors to suit your work style	x	x	x	x	
Supports DBMS-Specific Features	Deep functional support for DB2 for LUW, Oracle, SQL Server and Sybase. Change scripts leverage DBMS-specific features including objects, options, and syntax	x	x	x	x	
Source Code Control Integration	Integration with third-party source code control products supported via Eclipse Team API for sharing archives, sync scripts, jobs, datasources, and job results	x	x	x	x	
SQL Editor	Code folding, syntax highlighting, error identification, outline view	x	x	x	x	
Flexible Reporting	Supports HTML, PDF, XML, CSV, and RTF reports for all job types		x	x	x	
Command-Line API	Command-line generation wizard generates batch or ANT scripts with multi-job execution			x	x	
Email Notification with open and extensible API	Configurable email notification via JavaMail. Open API allows users to create their own customized notification extensions via Java/Eclipse			x	x	
Unlimited Datasource Connections	Supports an unlimited number of databases under management, for licensed DBMS platforms				x	

Feature	Description	Edition			
Schema and Configuration Management		Personal	Standard	Professional	Ultimate
Schema Archive	Capture archives of database schema	x	x	x	x
Schema Compare	Compare and view differences between live databases, live databases and archives, or between archives. View results of prior schema comparison executions at any time	x	x	x	x
Advanced Alter Generation	Generate alter scripts to synchronize selected objects or restore to a prior state. Handles object dependencies, and preserves data	x	x	x	x
Flexible Object Filtering	Capture an entire database or narrow selection by object type, owner, a specific set of named objects, or wildcard filtering	x	x	x	x
Manage server objects	Support for server objects within archive and compare jobs, e.g., rollback segments, server triggers, and database devices		x	x	x
Manage Database Configurations	Archive and compare database configuration settings		*	x	x
Manage system objects	Support for system objects within archive and compare			x	x
One-to-Many Compare	Compare one source against multiple targets, inside of one job			x	x

* Change Manager Standard Edition can view the configuration of a live database. It cannot archive or compare configuration settings.

Feature	Description	Edition			
Data Compare and Synchronization		Personal	Standard	Professional	Ultimate
Cross-DBMS Data Compare	Compare and synchronize data either inside of one database, or between two different databases	x	x	x	x
Automated Object Mapping	Automatic mapping of tables by primary key or unique index. Manually override table mapping or match keys	x	x	x	x
Configurable Comparison Options	Control comparison jobs with options such as ignoring training spaces and mixed case; match empty strings with nulls	x	x	x	x
Compression Comparison	Quickly compare large volumes of data, particularly effective with wide rows and over slower networks			x	x

Feature	Description	Edition			
Audit and Compliance Reporting		Personal	Standard	Professional	Ultimate
Configuration Standards	Use custom or live configurations parameter values to create standards. Audit database configurations to check for security liabilities and performance standards conformance with other types of standard settings			x	x
Archive configuration and schema Settings	Schema and configuration archives provide historical record for compliance auditing and reporting			x	x
Change monitoring and notification	Define and schedule live database to archive comparison jobs, set email notifications to notify when change occurs to a schema or setting			x	x
Schema Comparison Detail Report	Outlines what objects have actually changed either between points in time, or between two live environments, including color-coded DDL differences			x	x

DBMS Support
<ul style="list-style-type: none"> • IBM DB2 for LUW v8, v9 and v9.5 • Oracle 8i, 9i, 10g and 11g • SQL Server 2000, 2005, and 2008 • Sybase ASE 12.5 and 15 <p>Note: Datasource limitations vary by edition</p>

System Requirements
<ul style="list-style-type: none"> • 1.2 Ghz processor with 1 GB of RAM • 500 MB disk space • 1024 x 768 16-bit display • Internet Explorer 6 SP1 • Windows® XP Professional, Windows Server 2003, Windows Vista (Ultimate and Business) – 32-bit architecture only

Download a Free Trial at www.embarcadero.com

Corporate Headquarters | Embarcadero Technologies | 100 California Street, 12th Floor | San Francisco, CA 94111 | www.embarcadero.com | sales@embarcadero.com